



2017 Southwest Challenge
Collie Motorplex

SUPPLEMENTARY REGULATIONS

EVENT: 2017 Southwest Challenge

DATE: Sunday 4 June 2017

VENUE: Collie Motorplex
Powerhouse Rd, Collie

TRACK LICENCE NUMBER:

MA PERMIT NUMBER:

EVENT CONTACT Terina Hickey
0427 988 989

EVENT KEY OFFICIALS

Steward	Paul Hinds
Clerk of Course	Ross Edwards
Race Secretary	Terina Hickey

1. ANNOUNCEMENT

The SupermotoWA, hereafter called the Promoter will conduct the 2017 Southwest Challenge for Supermoto, Production 250-390, Mini-Motard and Postie Bikes at the Collie Motorplex, 643 Powerhouse Rd, Collie Burn WA on 4 June 2017.

2. JURISDICTION

2.1 The abovementioned meetings have been authorized by Motorcycling WA which has issued the Motorcycling Australia Permit Number **TBA** and is open to holders of current Motorcycling Australia Senior National and Restricted National Licenses.

2.2 The meeting will be held in accordance with the current General Competition Rules (GCR's) contained in the Manual of Motorcycle Sport, these Supplementary Regulations, and any final instructions approved by Motorcycling WA. By entering this meeting all parties agree to comply with these rules, regulations, by-laws and instructions.

3. EVENT OFFICIALS

The following officials will be overseeing the meeting:

Steward	Paul Hinds
Clerk of Course	Ross Edwards
Race Secretary	Terina Hickey
Scrutineer	Beau Erickson

4. ENTRIES

4.1 Entries are now open and close 8:00pm Friday 26 May, 9 days before the event. Late entries will not be accepted.

4.2 In the case of postponement or abandonment of the meeting, all or any part of the entry fee may be retained by the SupermotoWA, if such retention is approved by Motorcycling WA.

4.3 Cancellations.

If you have previously registered and can no longer make the event you have the option of canceling your registration. This must be done in writing before Wednesday 8:00pm before race day and forwarded to SupermotoWA. Your entry fee will be held by SupermotoWA and can be transferred to another rider or held to be used at the next round. No refunds will be given. If there are extenuating circumstances and you have to cancel after Wednesday at 8:00pm, it will be up to the committees discretion depending on circumstances if you forfeit your entry fee or if you can roll it over.

5. ENTRY FEE

5.1 Entry fees of \$150.00 for Sunday and \$175 for the whole weekend will apply.

5.2 Payment by Rider-Net online registration system only via SupermotoWA website.

6. SPECTATOR ENTRY PASSES

There will be no spectator entry passes, entry is free.

7. INSURANCE

7.1 National Personal Accident Scheme provides basic cover for death and permanent disability.

7.2 Ambulance Insurance is compulsory for licensees.

It is strongly recommended that competitors give consideration to taking out weekly benefits insurance.

8. MEDICAL SERVICES

The event will have event medical staff in attendance from the commencement of practice to the end of competition.

[Note to Promoters: Australian Championships require civil ambulances to be in attendance at all times ie, ambulance to transport injured to hospital]

9. SCRUTINEERING

9.1 Scrutineering will begin at 07:45 on Sunday. Competitors arriving Saturday shall have their machine examined between 16:00-17:00.

9.2 Machines entered in the competition must have successfully passed a machine examination prior to taking part in practice, qualifying or racing. A decal will be placed on the front number plate to indicate that it has been successfully examined.

9.3 Current competition licences and full riding gear must be presented at scrutineering. Eligibility checks can take place at any time during the meeting. Machines which suffer accident damage in practice or race sessions must be re-examined before participating again.

9.4 In addition to supervising the pulling down and checking of machines after official protests have been received by the Clerk of Course in accordance with the GCRs, the Steward can order that any machine be measured and if this occurs the Scrutineer will supervise a team member to pull down any machine that has taken part in the event. Failure to comply with this regulation will result in this matter being referred to the Clerk of Course for further action.

9.5 Machines will not be sealed for later checking after the event. All machines that are to be pulled down and scrutineered will take place at the circuit before the machine is released by the Scrutineer. A member of the rider's team must be available at all times to carry out the strip down under the control of the Scrutineer. Failure to comply with this regulation will result in this matter being referred to the Clerk of Course for further action.

10. CLASSES OF COMPETITION

Supermoto Open
Supermoto Clubman
Production 250cc-390cc
Senior Mini-Motard (Combined 5A and 5B)
Postie Bikes

11. ENTRIES TO CONSTITUTE A CLASS

11.1 To constitute a class for the purpose of gaining event points, the number of contestants entered and competing in each class shall not have a minimum requirement.

12. STARTS

The start will occur at the extinguishing of a red light situated at the end of the start straight. The penalty for a jump start is a mandatory 15 seconds to be added to the infringing rider(s) time(s). Jump start rules will be determined by the rules found in the MoMs for your respective discipline.

13. RACE FORMAT

There will be one 5 minute warm up followed by an 8 minute timed qualifying session for each class outlined in the schedule. Grid positions will be determined by combined times from both qualifying sessions. Racing will commence at 10:15 consisting of five races per class whereby event points will be awarded.

At the conclusion of competition a trophy presentation ceremony will be held.

14. EVENT SCHEDULE

7:00	Gates Open		
7:30	Rider Sign On		
7:45	Scrutineering Open		
8:15	Rider Briefing		
9:00	Warm Up	Mini-Motard/Postie Bike	5 mins
	Warm Up	Production 250-390cc	5 mins
	Warm Up	Supermoto Clubman	5 mins
	Warm Up	Supermoto Open	5 mins
9:30	Qualifying 1	Mini-Motard/Postie Bike	8 mins
	Qualifying 1	Production 250-390cc	8 mins
	Qualifying 1	Supermoto Clubman	8 mins
	Qualifying 1	Supermoto Open	8 mins
10:15	Race 1	Mini-Motard/Postie Bike	6 Laps
	Race 1	Production 250-390cc	8 Laps
	Race 1	Supermoto Clubman	7 Laps
	Race 1	Supermoto Open	8 Laps
11:00	Race 2	Mini-Motard/Postie Bike	6 Laps
	Race 2	Production 250-390cc	8 Laps
	Race 2	Supermoto Clubman	7 Laps
	Race 2	Supermoto Open	8 Laps
LUNCH			
12:30	Race 3	Mini-Motard/Postie Bike	6 Laps
	Race 3	Production 250-390cc	8 Laps
	Race 3	Supermoto Clubman	7 Laps
	Race 3	Supermoto Open	8 Laps
13:30	Race 4	Mini-Motard/Postie Bike	6 Laps
	Race 4	Production 250-390cc	8 Laps
	Race 4	Supermoto Clubman	7 Laps
	Race 4	Supermoto Open	8 Laps
14:30	Race 5	Mini-Motard/Postie Bike	6 Laps
	Race 5	Production 250-390cc	8 Laps
	Race 5	Supermoto Clubman	7 Laps
	Race 5	Supermoto Open	8 Laps
16:00	PRESENTATIONS		

Subject to change

For the purposes of drug and alcohol testing, the commencement of the meeting will be deemed to be 08:00 with the completion of the meeting being 30 minutes after the completion of the final race.

15. AWARDS AND PRIZEMONEY

SupermotoWA event trophies will be awarded to the top three points scoring competitors of Supermoto Open, Supermoto Clubman, Mini-Motard, Postie Bikes and Production 250-390cc.

16. GST

The Goods and Services Tax affects the payment of prizemoney. If you do not provide an ABN or declare the sport is a hobby, the Promoter must withhold 48.5% of prizemoney over \$50.00 which is otherwise payable to you. Please tick one of the boxes on the entry form and if appropriate provide your ABN to ensure the full amount of prize money is paid to you.

17. PRESENTATIONS

The presentations will commence at the conclusion of all competition events at 16:00.

18. MACHINES AND RIDERS

18.1 All machines entered must comply with the current GCRs for Supermoto, Road Racing and Supplementary Regulations for Postie Bikes competition.

18.2 Riders may have a second machine for the purpose of a spare or set up for different track conditions but it must be submitted to scrutineering for compliance.

18.3 Timing transponders will be used and must be attached to the upper fork leg, no other position will be deemed suitable.

18.4 Competitors arriving late will start from rear of grid.

18.5 Competitors who fail to arrive at the dummy grid before the field is released will start the race from pit lane after the last rider has passed.

19. POSTIE BIKES

SUPPLEMENTARY TECHNICAL REGULATIONS: SOLO BIKE

POSTIE BIKE

Machine Eligibility

The machine must be an Australian Compliance Honda CT110 for postal use or the domestic market and subsequently referred to as a "Postie Bike".

MACHINE AND RIDER IDENTIFICATION

Number Plates

For all competitions three number plates must be fitted;

Number plates must:

- a) Where they are not an integral part of the machine and are under 1.6mm in thickness, have rolled or wired edges,
- b) In the case of rectangular plates, have the corners formed to a 38mm radius,
- c) In the case of bolt on number plates, be made from a rigid material with minimum dimensions of 150mm height and 150mm width; and
- d) Have contrasting colours and number to be at least 100mm in height.

Front number plates:

- a) Must have figures which are clearly visible at a distance of 20 metres.
(in the case of the headlight, it can be taped over and used as a front number plate).

Side number plates:

- a) Must be fitted above a horizontal line drawn through the rear axle,
- b) Must have figures which are clearly visible at a distance of 20 metres.
- c) May be an integral part of the rear seat section, air box or battery cover.

FRAMES AND PARTS:

Frames:

Frames must be OEM and not have any material removed from the monocoque structure, shortening of the rear mud guard is not allowed.

Exhaust Systems

Exhaust systems must:

- a) Be fitted with silencers,
- b) Terminate at a point not more than 25mm beyond the rear extremity of the rear tyre tread,
- c) Be attached as closely as practicable to the machine and in a manner that does not, in the opinion of the Scrutineer, create a hazard to other competitors,

Centre and Side Stands

Centre and side stands must be removed for all types of competition in Postie Bikes.

Footrests

Footrests must:

- a) Be well rounded and designed so as to ensure that no dangerous edges are created due to wear.
- b) Not touch the ground at lean unless they are hinged or pivoted.

Handlebars

- a) The ends of the handlebars or twist grip sleeves must be securely plugged so as to present a flush or rounded end.
- b) Handlebar levers must have ball ends with a minimum diameter of 10mm.
- c) Throttle controls must be self-closing.

d) Postie Bikes must have a working handlebar mounted engine kill-switch.

Hand Protectors

If hand protectors are used, they may be double mounted, they must be of a shatter proof material.

Kick Start Levers

Kick start levers must be of the folding type.

Drive Chain Protection

Primary drives (the drive connecting engine to clutch) must be guarded so as to prevent direct access to the chain or sprockets with the fingers.

The guard must be constructed of:

- a) Metal having a minimum thickness of 1.6mm, which may be mesh or expanded metal provided the openings do not exceed 10mm, or
- b) Fibreglass having a minimum thickness of 3mm.

If a plastic, fibreglass or part open chain guard is used, a steel bolt of not less than 10mm diameter, placed outside the bottom rear quadrant of the clutch sprocket. This bolt, if damaged, must be replaced. Projecting sprockets, which are not behind a clutch assembly or directly behind a frame member, must be guarded where the sprocket teeth are further than 30mm from a frame member or swinging arm.

A counter shaft sprocket which is more than 30mm from the outside of the swing arm pivot, must be covered.

Tyres

Tyres must:

- a) Be commercially available in Australia,
- b) Be manufactured for road use in all weather conditions,
- c) Be not less than the machine manufacturer's recommended speed and load rating,
- d) Be worn no more than to the minimum tread depth indicators,
- e) Not be manufactured for only competition use,
- f) Not have an augmented or modified tread pattern,
- g) Comply with the service description (load and speed rating) permanently molded on the OEM tyre side wall,
- h) Comply with the relevant requirements of the nominated standard. e.g. ETRTO, JATMA, TRA & DOT.

Knobby tyres are not permitted in the Postie Bike class.

Rims

Front and rear wheel rims must be OEM (standard Postie bike) with dimensions as per original manufacturer homologation. (Rims must be 17" diameter X 1.4" width).

Brakes

- a) Each wheel must have an independent working drum brake of OEM dimensions.
- b) Brakes must be cable or rod operated, no hydraulics brakes will be permitted.

ENGINES:

Postie Bike engines must have:

Visible

- a) Lock wiring on oil caps and drain plugs.
- b) A non-return valve fitted to the fuel tank breather pipe.
- c) A hose running from the crankcase breather into a catch tank with a minimum capacity of 300cc.
- d) A fuel tank that does not leak when machine is laid on each side. Use of an O-ring under fuel cap is permitted.
- e) Postie Bikes with non-compliant engines will be allowed to compete, although are ineligible for championship points and will start rear of grid for all races.

Postie Bike engines must meet the following specifications:

- a) Capacity: Maximum 110cc (refer 10.16 for tolerances),
- b) Crankcase: OEM,
- c) Crankshaft: OEM,
- d) Connecting rod & piston: OEM,
- e) Seals, Bearings, Gaskets: Open,
- f) Barrel: OEM,
- g) Head: OEM,
- h) Coil: Open,
- i) Flywheel: OEM,
- j) Spark Plug: Open,
- k) Clutch: OEM,
- l) Carburettor: Open,
- m) Air filter: Open,
- n) Exhaust system: Open, (must comply with GCR 19.12)
- o) Gear ratios: Open,
- p) CDI ignition systems: Open
- q) All bikes must be naturally aspirated and combustion enhancers such as NOS may NOT be used.
- r) Fuel Tank: OEM

s) Fuel must comply with GCR 10.15,

Compulsory Modifications

The following must be removed:

- a) Mirrors,
- b) Centre and side stands,
- c) Registration plate and bracket.
- d) Rear racks

Any sharp edges left by the removal of the above components must be protected by a rolled edge or beading of minimum 3mm diameter.

The following must be added:

- a) Front and rear axle sliders must be fitted. Axle sliders must be constructed of a non-stick, non-abrasive material and anchorages must be contained within the device to impede contact with the ground.
- b) Foot pegs must be folding type, no fixed or rigid pegs are allowed.
- c) Foot peg sliders must be fitted to the underside of all foot pegs. Foot peg sliders must be constructed of a non-stick, non-abrasive material and anchorages must be contained within the device to impede contact with the ground.

Permitted Modifications

The following may be replaced or modified:

- a) Handlebars, but replacements must be mounted in the original position on the fork assembly,
- b) Instruments and handlebar switches, provided disconnections are made at the standard connectors and the main wiring loom is not cut,
- c) Brake pads.

The following may be removed:

- a) OEM top chain guard.
- b) Headlights, tail lights, indicators and horn, if not removed must be taped over. In the case of the headlight, it can be taped over with tape and used as a front number plate.
- c) Passenger footrests.

TIMING:

Timing transponders may be used and must be attached to the upper fork leg, no other position will be deemed suitable.

20. RIDING NUMBERS

Wherever possible, competitors will be allocated their registered riding number or their preferred riding number. All others will be allocated numbers at the SupermotoWA discretion.

All number plates on all machines MUST comply with the GCRs.

21. GRID POSITIONS

Grid positions for race 1 will be allocated by the times set in qualifying.

Race 2 grid positions will be in finishing order of race 1.

Race 3 grid positions will be in finishing order of race 2.

Race 4 grid positions will be in finishing order of race 3.

Race 5 grid positions will be in finishing order of race 4.

There will be a maximum of three riders per row with a minimum of 1.5 metres between riders. There will be a minimum of four metres between rows. Grid position 1 will be on the outside line on the right hand side of the track at Collie Motorplex.

22. RIDER GRADING

22.1 Any rider entered into the Clubman Class, who achieves a qualifying time that is at least equal to 110% of the time recorded by the fastest rider of the Open Class shall be reclassified to the Open Class.

22.2 Any rider who fails to qualify for Open Class, will be reclassified to the Clubman Class.

22.3 New riders may be graded at the discretion of the committee.

22.4 The Club Committee or Race officials may alter the percentage amount, on a per event basis, where it is deemed necessary and in the interests of safety, fairness, competitiveness or the application of the set amount would make the running of the event impractical.

23. SERIES POINTS

The event will be scored as the gcr's state with the following points system;

PLACE	POINTS
1st	25
2nd	22
3rd	20
4th	18
5th	16
6th	15
7th	14
8th	13
9th	12
10th	11
11th	10
12th	9
13th	8
14th	7
15th	6
16th	5
17th	4
18th	3
19th	2
20th	1

24. RIDERS' BRIEFING

A riders' briefing will be held prior to the commencement of racing, which ALL competitors MUST attend. Details will be included in the final instructions.

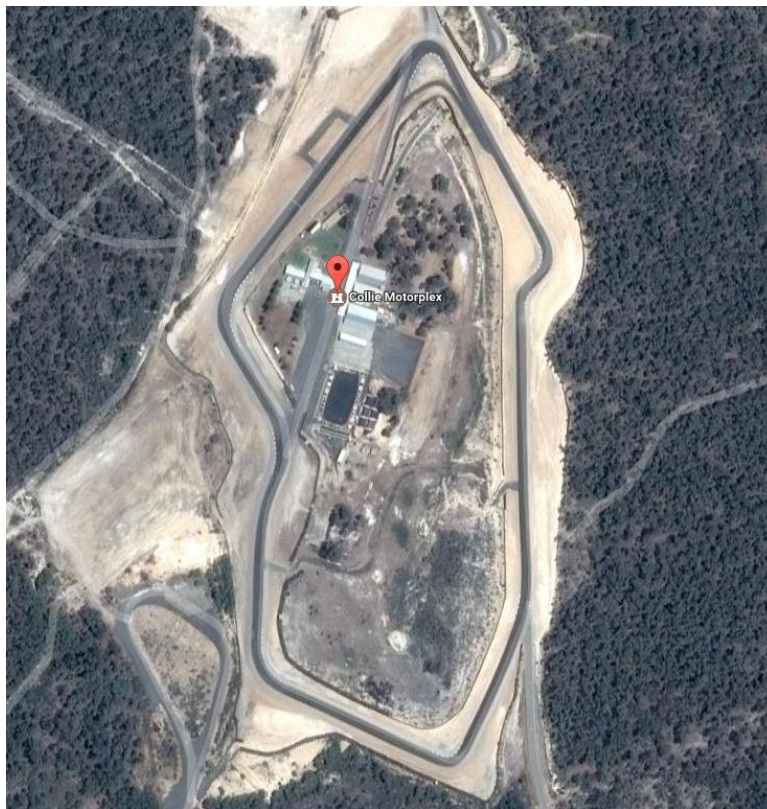
25. CIRCUIT DESCRIPTION

COLLIE MOTORPLEX

The track length is 1650 metres for Production Bikes.

The track length is 1450 metres for Supermoto Clubman, Supermoto Open, Mini-Motard and Postie Bike classes including a 370 metre dirt section.

Racing will be in an anti-clockwise direction.



26. FLAG MARSHAL POINTS

Collie Motorplex will have 9 flag points at the track manned by flag marshals.

27. TRACK WALK

All participating competitors must be given the opportunity to walk the track prior to any on track participation at the completion of the riders briefing.

28. FACILITIES

There may be no food and drink provisions but is subject to change and clarification will be provided in event final instructions. Competitors may be expected to bring their own food and drink.

There are male and female toilets located near canteen in the pit area.

29. NOISE

Noise restrictions for the event are as per GCR 19.12 for all classes and testing equipment will be used during practice and qualifying.

One machine from each class may be randomly selected to undergo noise testing before the commencement of practice.

Noise testing may take place at any time at the discretion of the Chief Scrutineer or the Clerk of Course. Refer to GCR 19.12 for details.

30. TYRES

All machines must have slick, wet or road type tyres fitted, no knobby tyres are permitted.

31. ANTI-DOPING POLICY

31.1 All competitors and officials are advised that drug testing may take place in accordance with MA's Anti-Doping Policy, as carried out by the Australian Sports Anti-Doping Authority. Refer to GCR 7.1.9 for details.

31.2 If any doubts exist over banned substances it is recommended competitors contact the Drugs in Sport Hotline, tel 1800 020 506. When drug testing takes place, the payment of prizemoney may be delayed at Motorcycling WA discretion until the results of the tests are known.

32. ALCOHOL TESTING PROCEDURE

All competitors and officials are advised that random breath-testing may take place during the competition.

33. CODE OF CONDUCT

All competitors, officials and parents are reminded of MA's Code of Conduct contained within MA's Member Protection Regulations, found at www.ma.org.au, which is a guide to appropriate behaviour at all motorcycle race meetings. This Code of Conduct applies to this Meeting and will be enforced.

34. ADMISSION CHARGES

Admission for spectators is free.